



ARMADA

SAPHIR SB



PASSENGER CAPACITY
10-12 PEOPLE



LOAD CAPACITY
2044-2852 LB



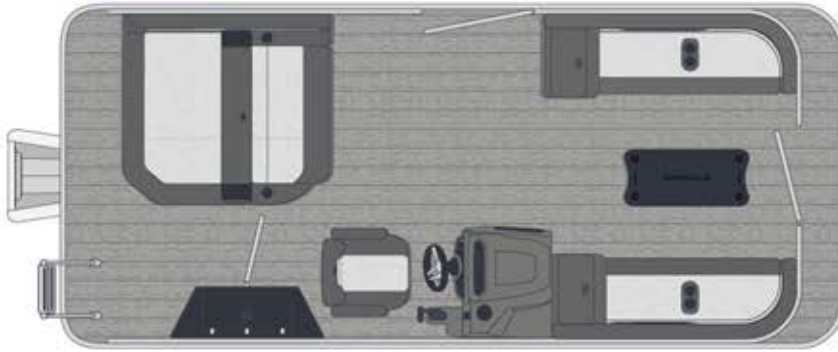
MAX. POWER
80-175 HP

WWW.ARMADAMARINE.CA

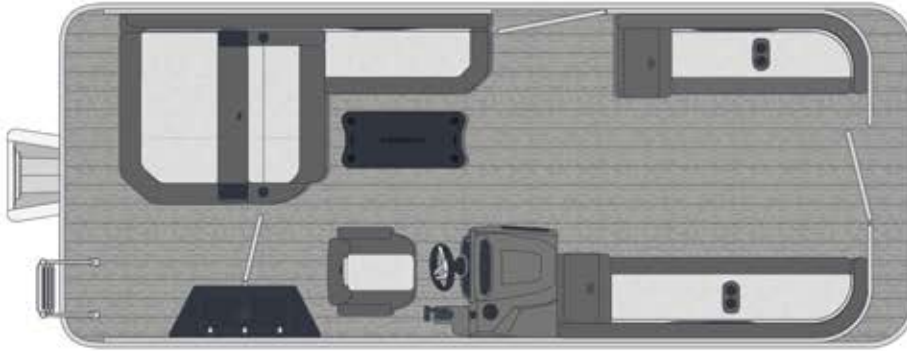
SAPHIR SB

19, 21 & 23 FEET AVAILABLE

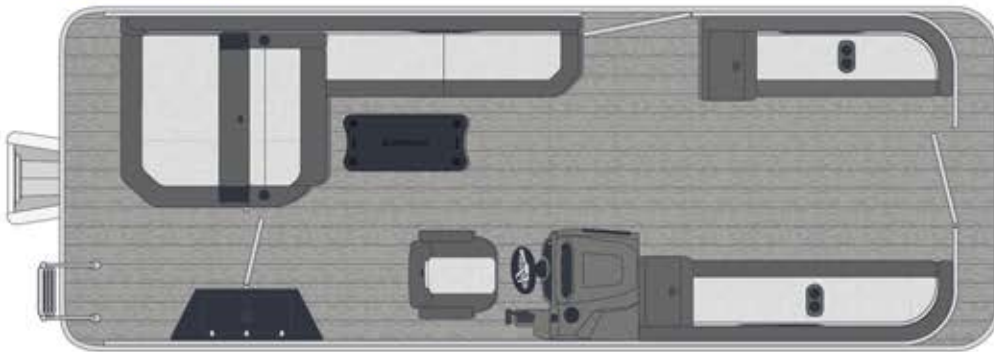
19 SB



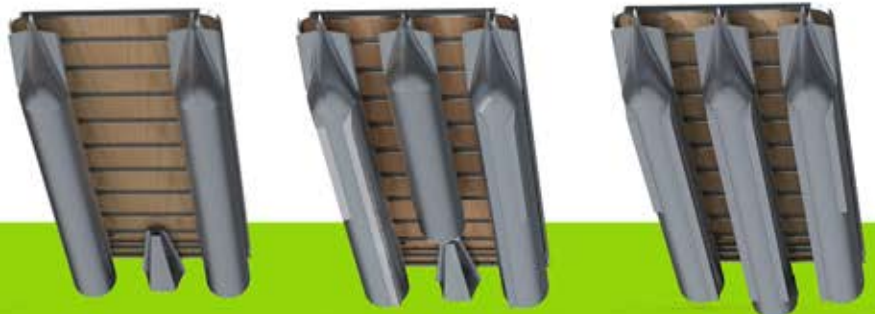
21 SB



23 SB



CONFIGURATION
STANDARD, SPORT
PERFORMANCE



WWW.ARMADAMARINE.CA

FURNISHINGS

- Classic furnishings with rotomolded bench bases
- 1 swivel driver's captain chair with sliding arm
- Large rear bench with "Swing back" backrest that tilts to face forward or backward on the pontoon
- Storage space under the entire swing back bench
- Storage module behind the driver's seat

CONSOLE

- New deluxe rotomould console with storage in the door
- Standard steering wheel with mechanical driving system
- Switches and one 12-volts electrical outlet and one USB outlet
- Boss marine Bluetooth two (2) speakers sound system

INSTRUMENTATION

- Fuel level indicator
- Tachymeter
- Speed indicator
- Voltmeter
- Motor tilt indicator (trim)
- Electric horn
- Mechanical control system

OTHER FEATURES

- Integrated 27 gallons fuel tank in the motor box (21' et 23')
- Integrated 17 gallons fuel tank in the motor box (19')
- Three-in-one navigation and docking lights
- Bimini rooftop (tube 1 ¼") with envelope
- Deluxe black table (removable) with 4 glass holders

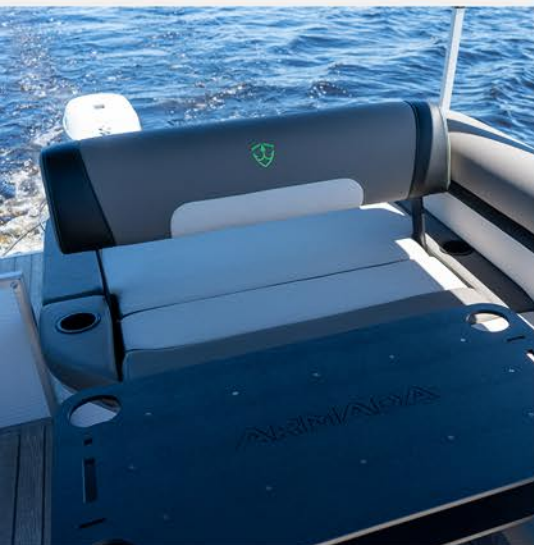
POPULAR OPTIONS

- Additional center tube with integrated motor box and Seastar unassisted hydraulic tilt steering system
- Additional center half-tube
- Underfloor underskin to minimize water noise under the pontoon (only with 3rd tube option)
- Ski locker floor compartment (only with 3rd tube option)
- Performance strakes for 3 tubes (only with 3rd tube option)
- Traction arch for ski/wake/tube including reinforcement required
- Storage canvas (Mooring)
- Full campeur rooftop
- Addition of 2 speakers (total of 4)
- Induction cellular charger
- Longitudinal LED light under floor (battery not included)
- Tilt steering wheel Extreme package
- New dressing room installed in the swing back
- Captain's seat with high backrest
- Second captain's seat instead of the bench seat (21' and 23' only)

SAPHIR SB



ARMADA



BLACK OUTER SHEET

The furnishing color schemes to match the black sheet metal of your Saphir pontoon.

FURNISHINGS



WHITE OUTER SHEET

The upholstery color schemes to match the white sheet metal of your Saphir pontoon.

FURNISHINGS



BLACK & GREEN OUTER SHEET

The Lime Green option on black sheet metal automatically comes with the Black and Gray interior furniture color with "Lime Green" stitching.

FURNISHINGS



WHITE & GREEN OUTER SHEET

The Lime Green option on white sheet metal automatically comes with the Black and Gray interior furniture color with "Lime Green" stitching.

FURNISHINGS

